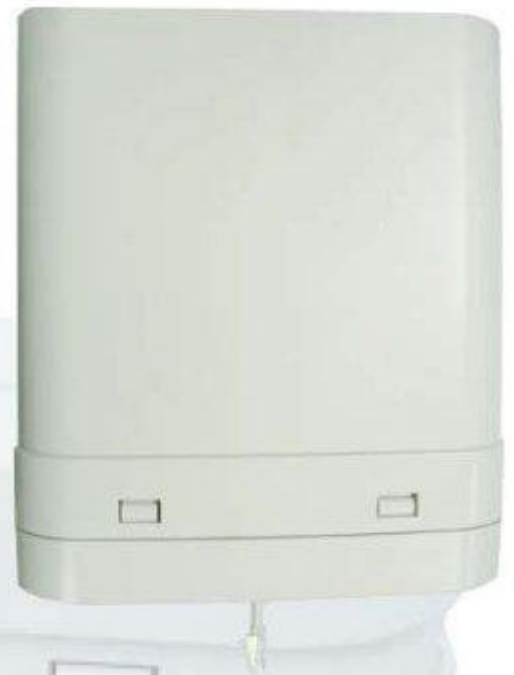
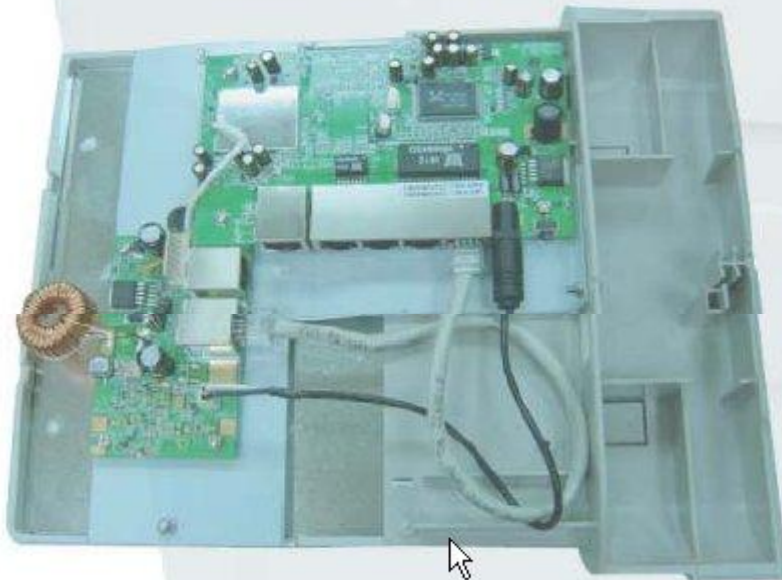


## ARG 2615 SERIES

# ARGCPE2615

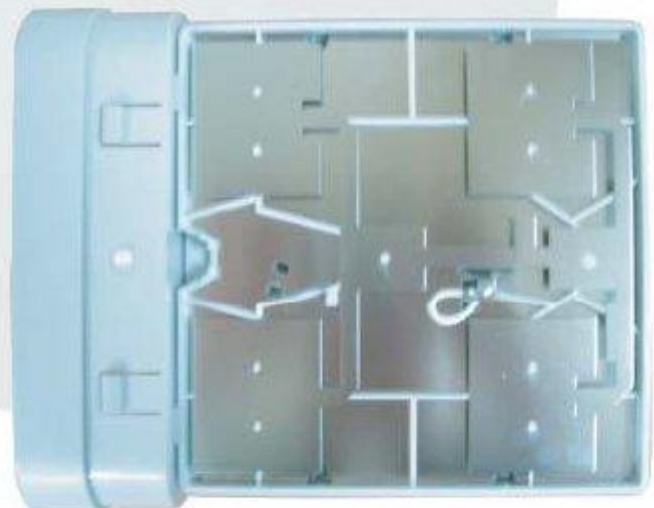
High Power Wireless Radio CPE (Client Premises Equipment)  
CPE/ AP/ Router/ Client/ Bridge/ Repeater for 802.11b/ g

This device with integrated powerful radio and antenna in a weatherproof enclosure offers a cost-effective solution for hotspot to make to Point-to-Point and Point to multi-Point solutions.



### PACKAGE CONTENTS

- CPE
- 48V Adapter @ 400 mA
- DC Injector
- User Manual CD



# ARGCPE2615

High Power Wireless Radio CPE (Client Premises Equipment)  
CPE/ AP/ Router/ Client/ Bridge/ Repeater for 802.11b/ g

## FEATURES:

- > MESH (OLSR) support: <http://www.olsr.org>
- > SSH Client support
- > Easy personal script /etc/script.sh file editing via web interface
- > Region Domain selection via WEB (11 or 14 channels)
- > Easy /etc/ethers file editing via web interface
- > Tx power control
- > Remote access via SSH2
- > Freedom to edit your own scripts
- > Bandwidth control ( IP, MAC and Interface ) with groups option
- > Ping based Watchdog
- > Block Relay
- > PPPoE Relay
- > DHCP Relay
- > Config Wizard
- > Auto Discovery Tool
- > 3 main operational modes: WISP, Gateway and Bridge
- > 802.1x, WPA and Radius
- > MAC, IP, ports filter
- > DMZ Host
- > PPPoE-Client
- > PPTP Protocol
- > DDNS Protocol
- > IAPP Protocol
- > Hide SSID
- > WEB Interface
- > Signal meter
- > AP, Client, WDS+AP, WDS and Ad Hoc modes
- > Site Survey
- > DHCP server
- > DHCP Client
- > Up to 5 IP Alias via WEB interface
- > uPNP
- > Spanning Tree Protocol
- > WAN Management protection
- > MAC clone ( for just one machine )
- > System commands via WEB interface
- > Log system ( local and remote )



# ARGCPE2615

High Power Wireless Radio CPE (Client Premises Equipment)  
CPE/ AP/ Router/ Client/ Bridge/ Repeater for 802.11b/ g

## SPECIFICATION:

Model Name	ARGCPE2615
Product Name	Outdoor CPE WLAN Broadband AP/Router with Antenna
Standard	802.11b/g(Wireless), 802.3(10BaseT), 802.3u(100BaseT)
Data Transfer Rate	54Mbps(Wireless), 100Mbps(Ethernet)
Modulation Method	CCK (802.11b), OFDM (802.11g)
Frequency Band	2.4GHz – 2.497GHz ISM Band, DSSS
RF Output Power	CCK< 26 dBm, OFDM< 20 dBm
Receiver Sensitivity	802.11b -80 dBm@8%, 802.11g -68 dBm@5%
Operation Range	(depend on surrounding)
LED	Power, Active (WLAN), Act/Link (Ethernet)
Security	64 bit/128 bit WEP, WPA, WPA2, port filtering, IP filtering, MAC filtering, port forwarding and DMZ hosting
LAN interface	One 10/100BaseT with RJ45 port (WAN) Four 10/100BaseT with RJ45 ports (LAN)
Power Consumption	48V@400mA Adaptor,DC Injector
Operating Temperature	-10 ~ 60° C ambient temperature
Storage Temperature	-20 ~ 70°C ambient temperature
Humidity	5 to 95% maximum (non-condensing)
Dimension	259 x 215 x 98 mm
Antenna Spec.	Intergrated 15 dBi plane antenna
VSWR	1.8 : 1 Max.
Impedance	50 Ohms
Polarization	Linear vertical
HPBW/horizontal	30°
HPBW/vertical	30°
Front back ratio	15dB
Power handling	50 Watts (CW)



# ARGCPE2615

High Power Wireless Radio CPE (Client Premises Equipment)  
CPE/ AP/ Router/ Client/ Bridge/ Repeater for 802.11b/ g

