

▶ INTERNET ACCESS CONFIGURATION GUIDE

Contents

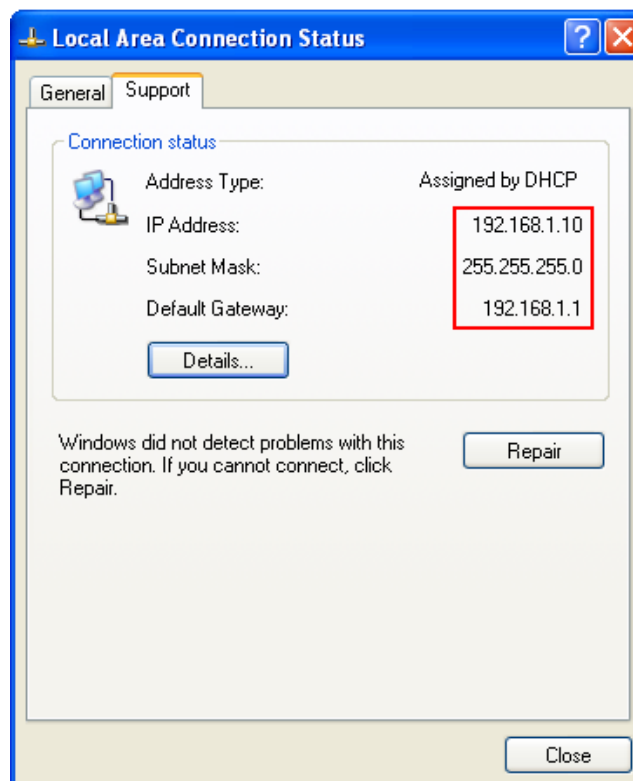
STEP 1: DSL Configuration (Vigor 2800 G/VG)	1
STEP 2: Static IP Configuration (Vigor 2900)	5

The following instructions, will guide you how to configure internet in different scenarios with different routers.

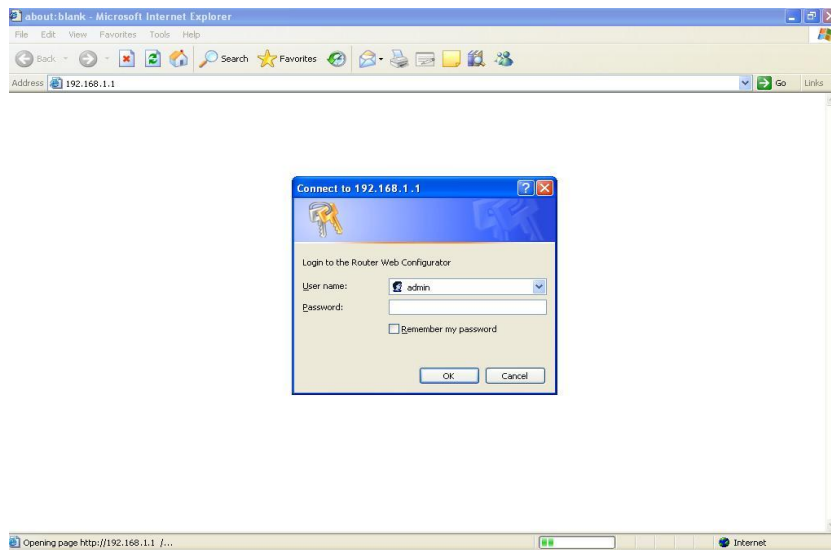
STEP 1: DSL Configuration (Vigor 2800 G/VG)

Note: Before configuration make sure you have the DHCP enabled on your PC/Laptop. If it is enabled follow the steps below.

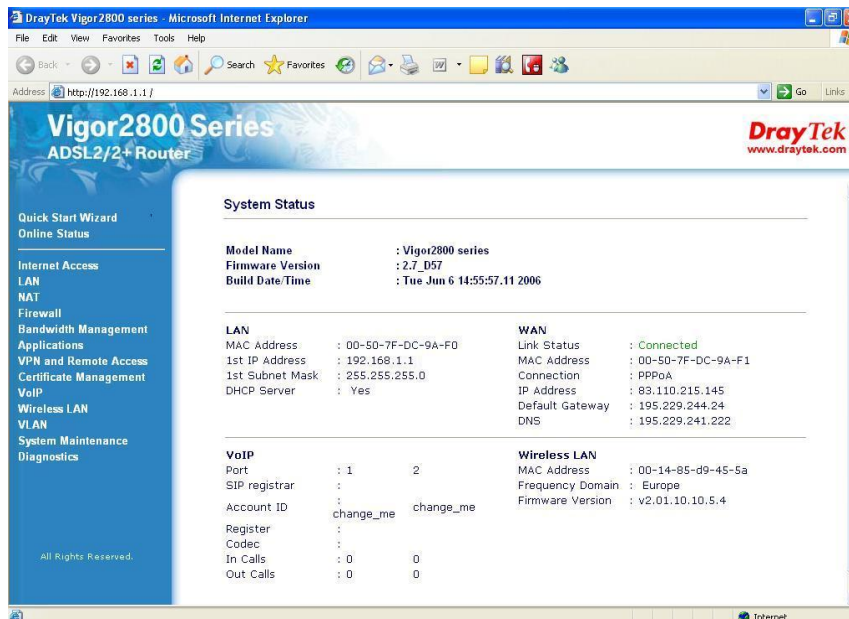
- Switch ON the router & connect the LAN cable from router to the PC/Laptop.
- In the LAN settings verify that you have got the IP address i.e. *192.168.1.xx*, as shown in figure.



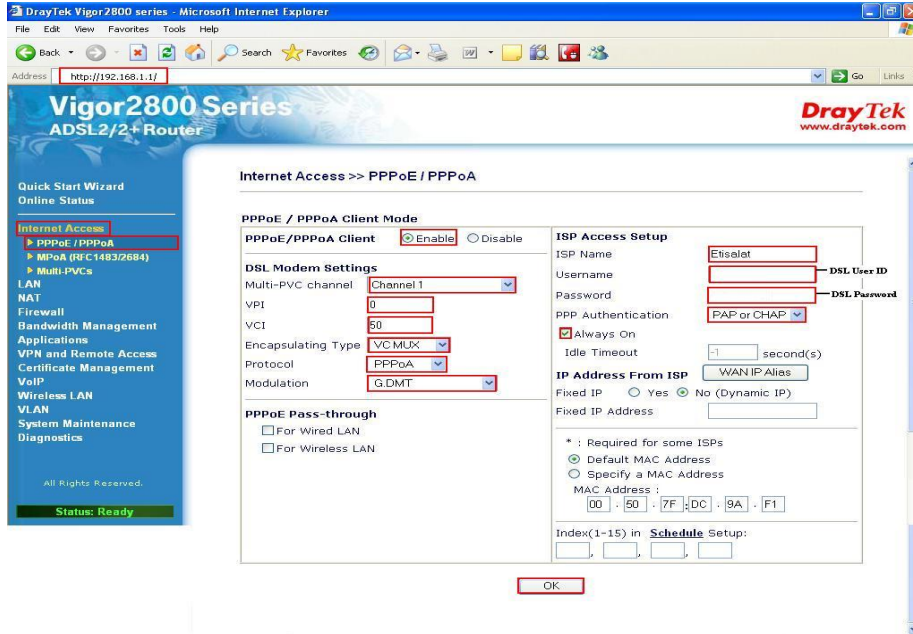
- C. Open Internet Explorer or any browser and in the address field type *192.168.1.1* and press enter to see the following.



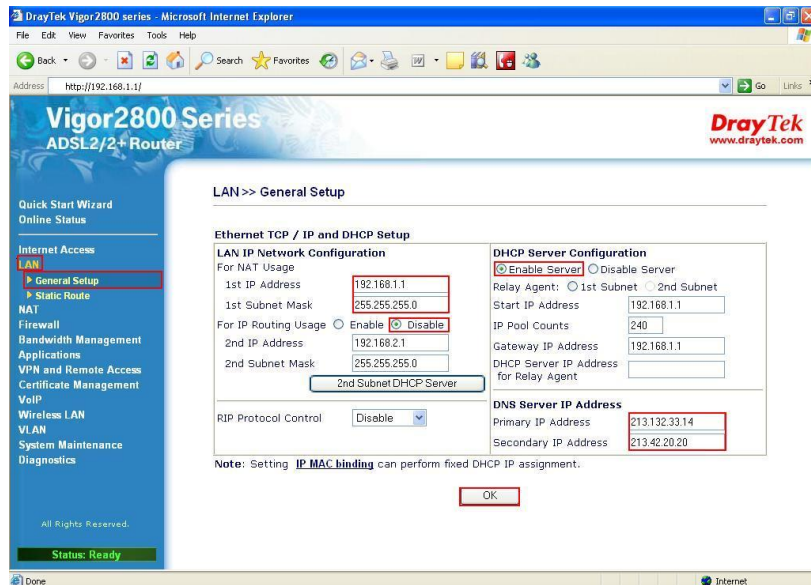
Note: Type “admin” in the username field & click Ok to get the following.



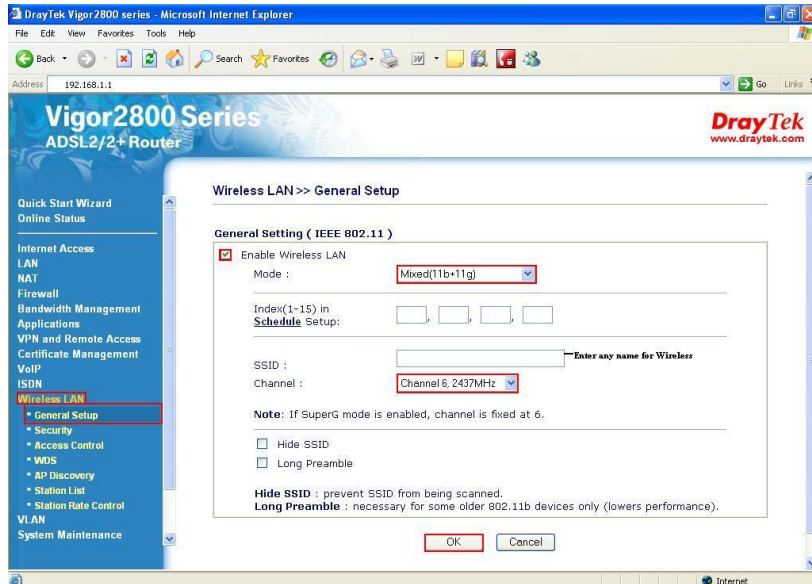
- D. Click on the “Internet Access” to configure the DSL connection & follow the “RED Marks” shown in the figure.



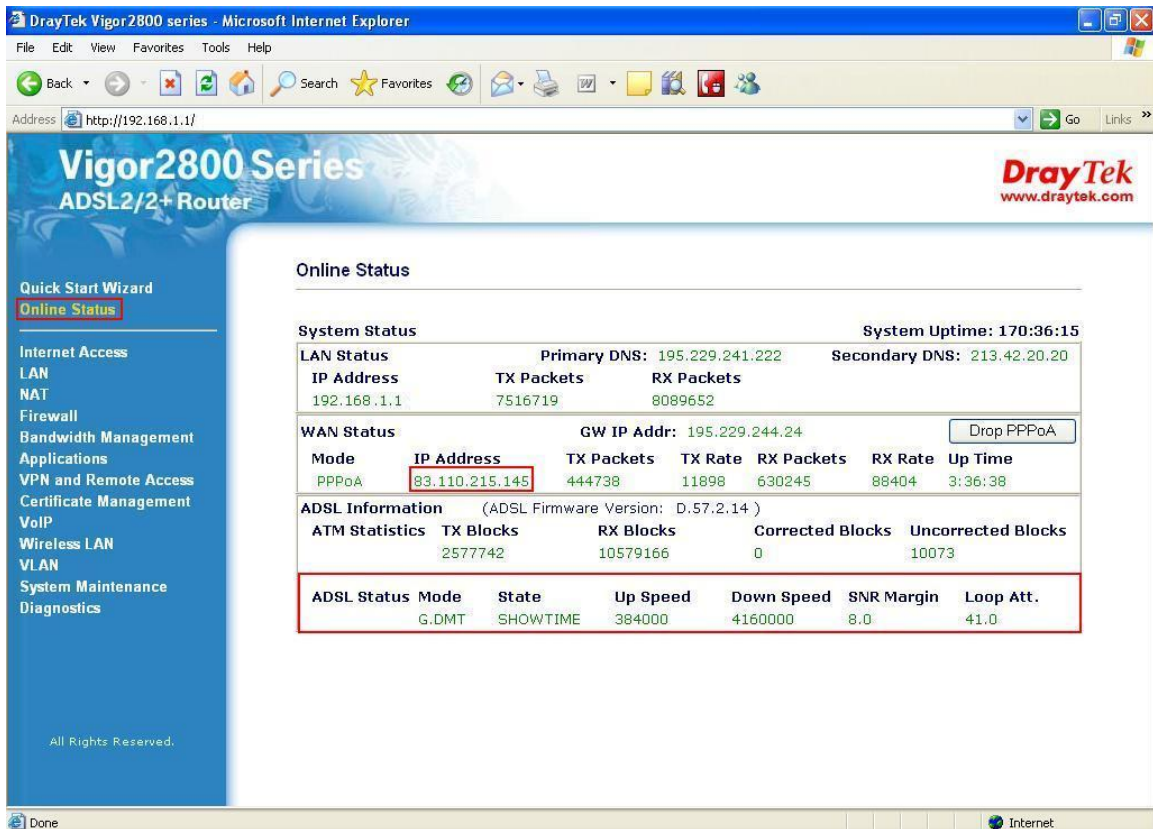
- E. After configuring “Internet Access” click “LAN” to configure the local area network settings follow the “RED Marks” shown in the figure.



- F. After configuring “LAN” click on “Wireless LAN” to configure the wireless SSID & follow the “RED Marks” shown in the figure.



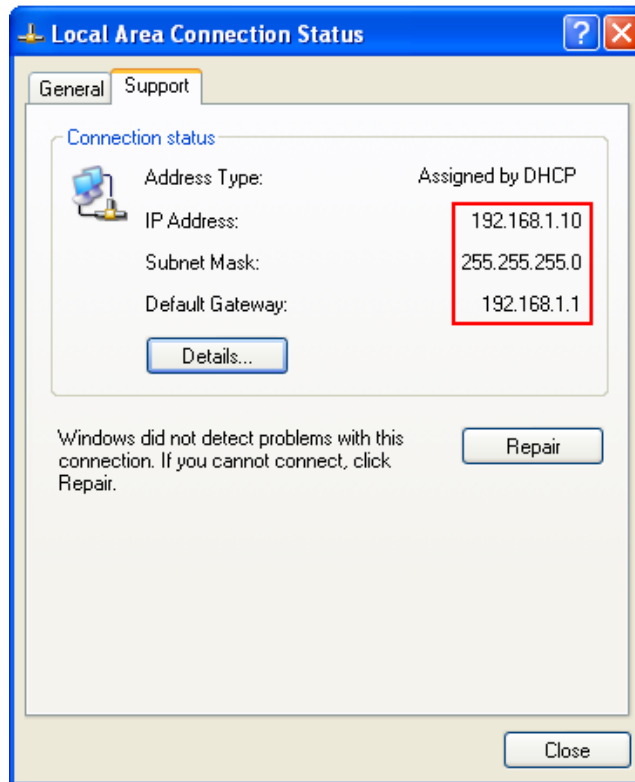
- G. If you are done with the above steps click on “*Online Status*” to see if your DSL line is sync and you are connected to Internet as shown in below figure.



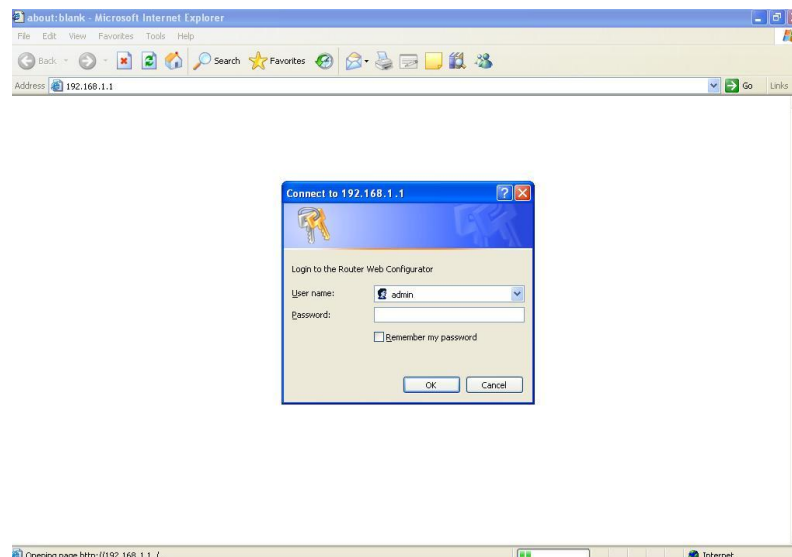
STEP 2: Static IP Configuration (Vigor 2900)

Note: Before configuration make sure you have the DHCP enabled on your PC/Laptop. If it is enabled follow the steps below.

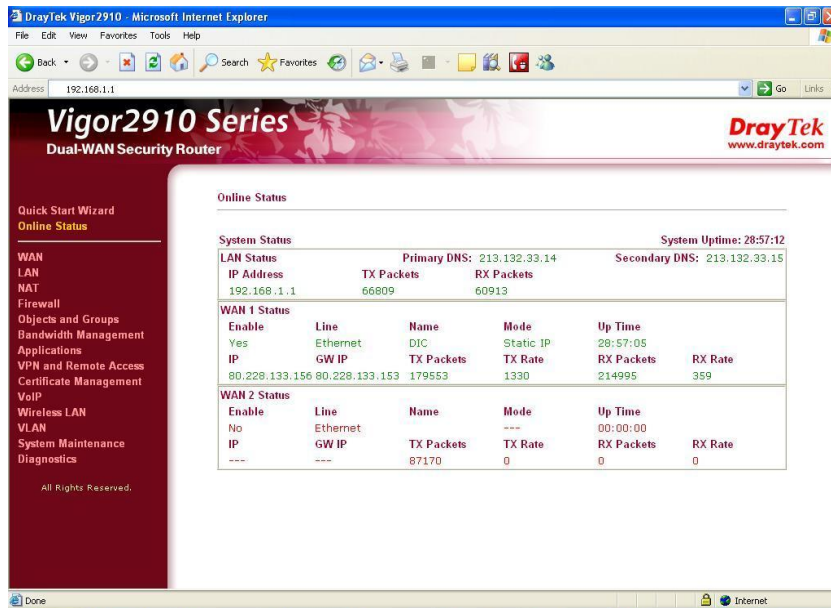
- A. Switch ON the router & connect the LAN cable from router to the PC/Laptop.
- B. In the LAN settings verify that you have got the IP address i.e. *192.168.1.xx*, as shown in figure.



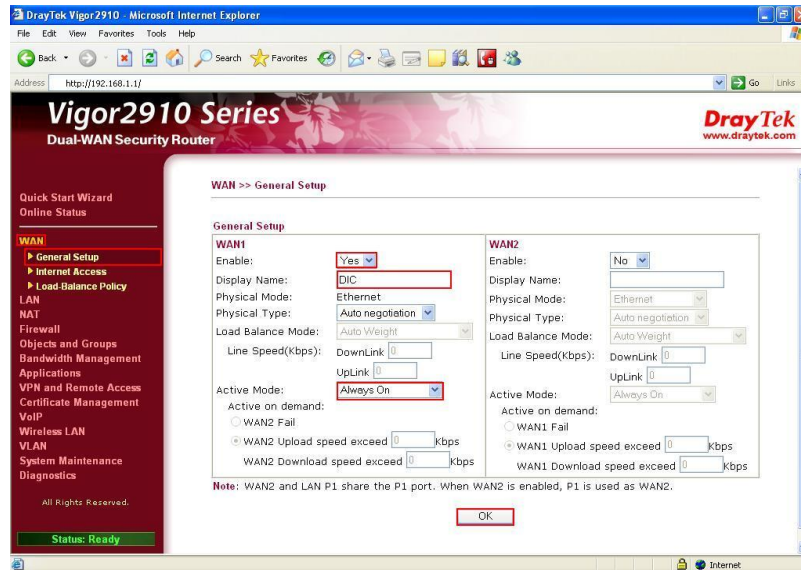
- C. Open Internet Explorer or any browser and in the address field type *192.168.1.1* & press enter to see the following.



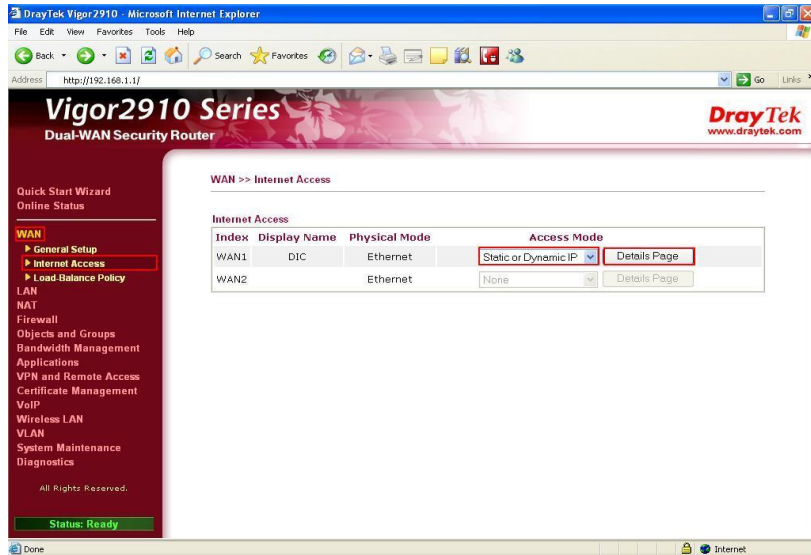
Note: Type "admin" in the username field & click Ok to get the following.



D. Click on the "WAN" & "General Setup" & follow the "RED Marks" to configure WAN shown in the figure.



E. Click on the "Internet Access" & select the "Access Mode" i.e. "Static or Dynamic IP" as shown in figure.



- F. Click on the “Details Page” & configure the internet with the “Static or Dynamic IP” as shown with the “RED Marks” in the figure.

